

# WINDSOR WALK

REPLATTING LOTS 113 THROUGH 116, PLAN OF BLOCK Q - PROSPER COLONY, AS RECORDED IN PLAT BOOK "D", PAGE 106, OF THE PUBLIC RECORDS OF ORANGE COUNTY, FLORIDA.

SHEET 1 OF 3

Recorded 4-16-96  
Page 22 Reporting  
out.

PARCEL OF LAND LOCATED IN THE SOUTHEAST QUARTER OF SECTION 9, TOWNSHIP 24 SOUTH, RANGE 29 EAST BEING A PORTION OF THE PLAN OF BLOCK "G" PROSPER COLONY, ACCORDING TO THE PLAT THEREOF, AS RECORDED IN PLAT BOOK "D", PAGE 106 OF THE PUBLIC RECORDS OF ORANGE COUNTY, FLORIDA, DESCRIBED AS FOLLOWS:

THE ABOVE DESCRIBED PARCEL OF LAND LIES IN ORANGE COUNTY, FLORIDA AND CONTAINS 45.999 ACRES. MORE OR LESS.



STATE OF FLORIDA  
COUNTY OF ORANGE  
THIS IS TO CERTIFY, THAT ON February 14, 1986, DATED  
BEFORE ME, AN OFFICED DULY AUTHORIZED TO TAKE ACKNOWLEDGE-  
MENTS IN THE STATE AND COUNTY AFORESAID, PERSONALLY APPEAR-  
ED Donald H. Eddins,  
AN INDIVIDUAL SERVING CORPORATION  
PERSON DESCRIBED WHO EXECUTED THE FOREGOING JUDGMENT AND  
CONSENT TO DEDICATION AND GENERALLY ACKNOWLEDGED THE EX-  
ECUTION THEREOF TO BE HIS/HER/THEIR FREE ACT AND DEED FOR  
THE USES AND PURPOSES THEREIN EXPRESSED.

IN WITNESS WHEREOF, I HAVE HEREUNTO SET MY HAND AND SEAL  
ON THE ABOVE DATE.

NOTARY PUBLIC.

*Eileen G. Therman*

Oct. 27, 1989

NOTARY COMMISSION EXPIRES:

[illegible][illegible]

STATE OF FLORIDA  
COUNTY OF HARRIS  
BEFORE ME, AN OFFICER DULY AUTHORIZED TO TAKE ACKNOWLEDGMENTS, PERSONALLY AP  
PEARED THE ABOVE NAMED OFFICERS KNOWN TO ME TO BE THE PERSONS WHO ON BEHALF  
THE ABOVE NAMED PARTNERSHIP EXECUTED THE FOREGOING DEDICATION AS A FREE ACT AND IN  
WITNESS MY HAND AND SEAL THIS 14<sup>TH</sup> DAY OF NOVEMBER, 1987

NOTARY PUBLIC  
*Charles A. Daugherty*

*William B. Taylor*  
TREASURER  
*Benjamin J. Shuman*  
WITNESS

BY: JEREMY ONE  
VENTURE INC.  
BY: JEREMY ONE  
WITNESS  
*Charles A. Daugherty*  
NOTARY PUBLIC

KNOW ALL MEN BY THESE PRESENTS, That the undersigned, being a licensed and registered land surveyor, does hereby certify that on JUNE 23, 1986

**CERTIFICATE OF APPROVAL**  
**BY ZONING DIRECTOR**  
*Sharon Smith*  
Examined and Approved: \_\_\_\_\_  
Zoning Director  
Date *2/19/87*

Approved: \_\_\_\_\_ Date: 3.9.02  
and \_\_\_\_\_  
County Engineer

CERTIFICATE OF APPROVAL BY BOARD  
OF COUNTY COMMISSIONERS

THIS IS TO CERTIFY, That on 2/9/87 the foregoing plat was approved by the Board of County Commissioners of Orange County, Florida.

Chairman of the Board.

Thomas H. Locken  
Clerk of the Board.  
BY *William D. C.*

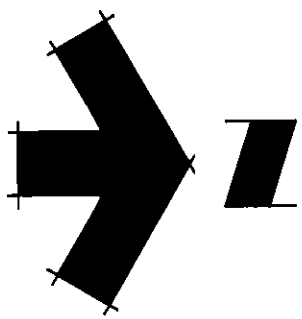
CERTIFICATE OF COUNTY COMPTROLLER  
I HEREBY CERTIFY, That I have examined the foregoing plot and find  
that it complies in form with all the requirements of Chapter 177, Florida  
Statutes, and was filed for record on FEBRUARY 16, 1997  
at 3:21 P.M. File No. 270 1551  
Adrian H. L. Ockert  
County Comptroller  
In and for Orange County, Fla.  
BY W. T. Monaghan D.C.

# WINDSOR WALK

PLAT BOOK 19 PAGE 5

LOCATED IN SECTION 9, TOWNSHIP 24 SOUTH, RANGE 29 EAST, ORANGE COUNTY, FLORIDA.

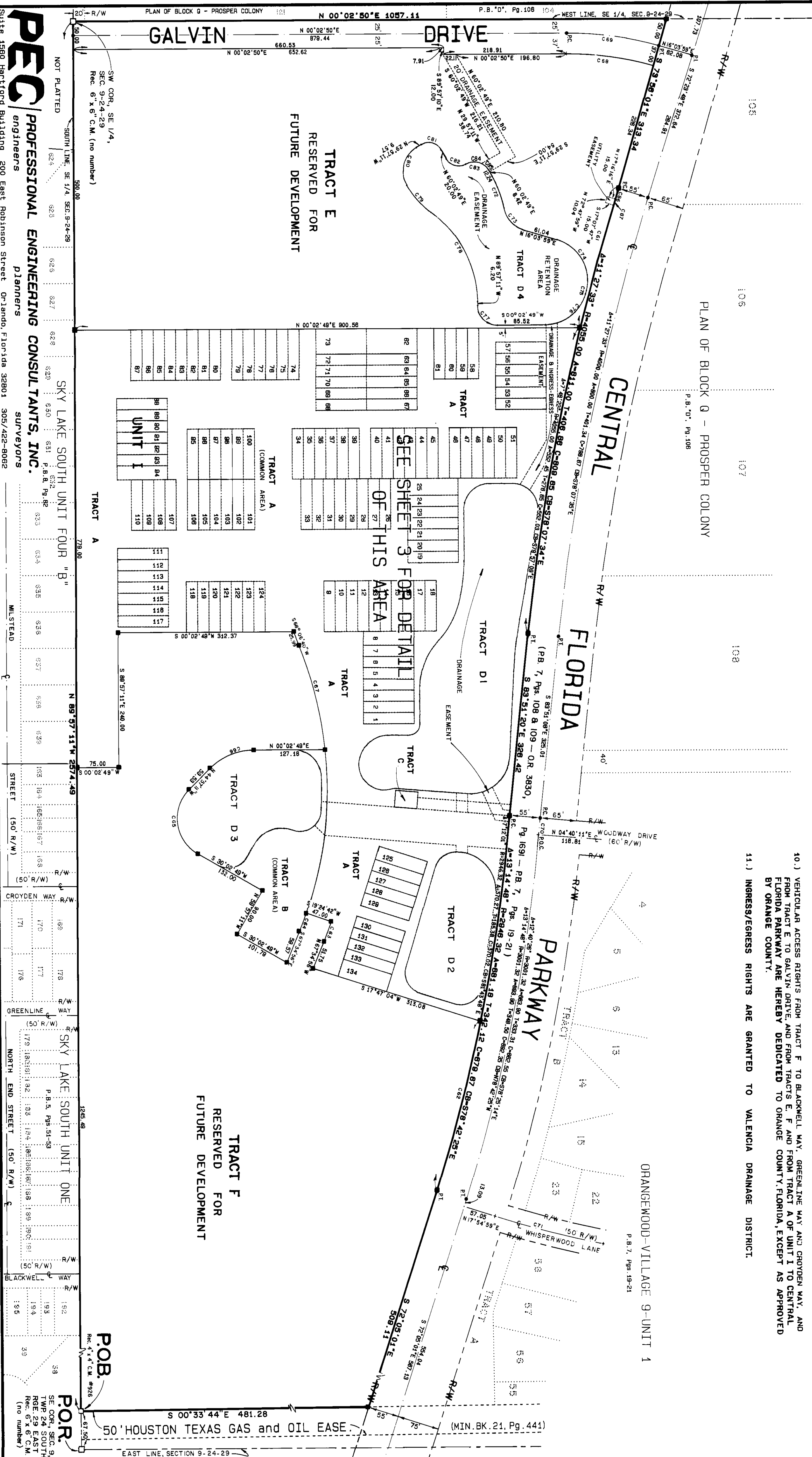
SHEET 2 OF 3



0 100 200 300  
SCALE: 1" = 100'

## SURVEYOR'S NOTES :

- 1.) BEARINGS, SHOWN HEREON, ARE RELATIVE TO ASSUMED DATUM, BASED ON THE NORTH LINE OF SKY LAKE SOUTH UNIT FOUR "B", RECORDED IN PLAT BOOK 8, PAGE 82, PUBLIC RECORDS OF ORANGE COUNTY, FLORIDA, AS BEING NORTH 89° 57' 11" WEST.
- 2.) ——— DENOTES A PERMANENT REFERENCE MONUMENT (PRM), A SET 4"x4" CONCRETE MONUMENT WITH A BRASS DISC MARKED "PLS 2050".
- 3.) ——— DENOTES A PERMANENT CONTROL POINT (PCP), A SET NAIL AND DISC MARKED "PLS 2050".
- 4.) TRACT B, OF UNIT I, IS TO BE USED FOR AMENITIES, OPEN SPACE, LANDSCAPING, ROADWAY AND PARKING.
- 5.) TRACT A, OF UNIT I, IS TO BE USED FOR OPEN SPACE, ROADWAY, SIDEWALKS, PARKING, DRAINAGE AND UTILITY EASEMENTS AND LANDSCAPING.
- 6.) THE COMMON AREA, SHOWN HEREON, CONSISTS OF TRACTS A AND B OF UNIT I AND SHALL BE OWNED AND MAINTAINED BY THE WINDSOR WALK HOMEOWNERS ASSOCIATION.
- 7.) TRACTS D1, D2, D3 OF UNIT I AND TRACT D4 OF TRACT E, SHOWN HEREON, SHALL BE CONVEYED TO VALENCIA DRAINAGE DISTRICT AND SHALL BE MAINTAINED BY VALENCIA DRAINAGE DISTRICT IN ACCORDANCE WITH THEIR REQUIREMENTS.
- 8.) TRACT E AND TRACT F, SHOWN HEREON, ARE RESERVED FOR FUTURE DEVELOPMENT.
- 9.) TRACT C OF UNIT I, GALVIN DRIVE, THE INGRESS-EGRESS, DRAINAGE AND UTILITY EASEMENTS, SHOWN HEREON, ARE HEREBY DEDICATED TO ORANGE COUNTY, FLORIDA.
- 10.) VEHICULAR ACCESS RIGHTS FROM TRACT F TO BLACKWELL WAY, GREENLINE WAY AND CROUDEN WAY, AND FROM TRACT E TO GALVIN DRIVE, AND FROM TRACTS E, F AND FROM TRACT A OF UNIT I TO CENTRAL FLORIDA PARKWAY ARE HEREBY DEDICATED TO ORANGE COUNTY, FLORIDA, EXCEPT AS APPROVED BY ORANGE COUNTY.
- 11.) INGRESS/EGRESS RIGHTS ARE GRANTED TO VALENCIA DRAINAGE DISTRICT.



**PEC** PROFESSIONAL ENGINEERING CONSULTANTS, INC. **engineers** **planners** **surveyors**  
Suite 1550 Hartford Building 200 East Robinson Street Orlando, Florida 32801 305/422-8062

NOT PLATTED SOUTH LINE, SE 1/4, SEC. 9-24-29 62.4 62.5 62.7 62.8 62.9 63.0 63.1 63.2 63.3 63.4 63.5 63.6 63.7 63.8 63.9 64.0 64.1 64.2 64.3 64.4 64.5 64.6 64.7 64.8 64.9 65.0 65.1 65.2 65.3 65.4 65.5 65.6 65.7 65.8 65.9 66.0 66.1 66.2 66.3 66.4 66.5 66.6 66.7 66.8 66.9 67.0 67.1 67.2 67.3 67.4 67.5 67.6 67.7 67.8 67.9 68.0 68.1 68.2 68.3 68.4 68.5 68.6 68.7 68.8 68.9 69.0 69.1 69.2 69.3 69.4 69.5 69.6 69.7 69.8 69.9 70.0 70.1 70.2 70.3 70.4 70.5 70.6 70.7 70.8 70.9 71.0 71.1 71.2 71.3 71.4 71.5 71.6 71.7 71.8 71.9 72.0 72.1 72.2 72.3 72.4 72.5 72.6 72.7 72.8 72.9 73.0 73.1 73.2 73.3 73.4 73.5 73.6 73.7 73.8 73.9 74.0 74.1 74.2 74.3 74.4 74.5 74.6 74.7 74.8 74.9 75.0 75.1 75.2 75.3 75.4 75.5 75.6 75.7 75.8 75.9 76.0 76.1 76.2 76.3 76.4 76.5 76.6 76.7 76.8 76.9 77.0 77.1 77.2 77.3 77.4 77.5 77.6 77.7 77.8 77.9 78.0 78.1 78.2 78.3 78.4 78.5 78.6 78.7 78.8 78.9 79.0 79.1 79.2 79.3 79.4 79.5 79.6 79.7 79.8 79.9 80.0 80.1 80.2 80.3 80.4 80.5 80.6 80.7 80.8 80.9 81.0 81.1 81.2 81.3 81.4 81.5 81.6 81.7 81.8 81.9 82.0 82.1 82.2 82.3 82.4 82.5 82.6 82.7 82.8 82.9 83.0 83.1 83.2 83.3 83.4 83.5 83.6 83.7 83.8 83.9 84.0 84.1 84.2 84.3 84.4 84.5 84.6 84.7 84.8 84.9 85.0 85.1 85.2 85.3 85.4 85.5 85.6 85.7 85.8 85.9 86.0 86.1 86.2 86.3 86.4 86.5 86.6 86.7 86.8 86.9 87.0 87.1 87.2 87.3 87.4 87.5 87.6 87.7 87.8 87.9 88.0 88.1 88.2 88.3 88.4 88.5 88.6 88.7 88.8 88.9 89.0 89.1 89.2 89.3 89.4 89.5 89.6 89.7 89.8 89.9 90.0 90.1 90.2 90.3 90.4 90.5 90.6 90.7 90.8 90.9 91.0 91.1 91.2 91.3 91.4 91.5 91.6 91.7 91.8 91.9 92.0 92.1 92.2 92.3 92.4 92.5 92.6 92.7 92.8 92.9 93.0 93.1 93.2 93.3 93.4 93.5 93.6 93.7 93.8 93.9 94.0 94.1 94.2 94.3 94.4 94.5 94.6 94.7 94.8 94.9 95.0 95.1 95.2 95.3 95.4 95.5 95.6 95.7 95.8 95.9 96.0 96.1 96.2 96.3 96.4 96.5 96.6 96.7 96.8 96.9 97.0 97.1 97.2 97.3 97.4 97.5 97.6 97.7 97.8 97.9 98.0 98.1 98.2 98.3 98.4 98.5 98.6 98.7 98.8 98.9 99.0 99.1 99.2 99.3 99.4 99.5 99.6 99.7 99.8 99.9 100.0 100.1 100.2 100.3 100.4 100.5 100.6 100.7 100.8 100.9 101.0 101.1 101.2 101.3 101.4 101.5 101.6 101.7 101.8 101.9 102.0 102.1 102.2 102.3 102.4 102.5 102.6 102.7 102.8 102.9 103.0 103.1 103.2 103.3 103.4 103.5 103.6 103.7 103.8 103.9 104.0 104.1 104.2 104.3 104.4 104.5 104.6 104.7 104.8 104.9 105.0 105.1 105.2 105.3 105.4 105.5 105.6 105.7 105.8 105.9 106.0 106.1 106.2 106.3 106.4 106.5 106.6 106.7 106.8 106.9 107.0 107.1 107.2 107.3 107.4 107.5 107.6 107.7 107.8 107.9 108.0 108.1 108.2 108.3 108.4 108.5 108.6 108.7 108.8 108.9 109.0 109.1 109.2 109.3 109.4 109.5 109.6 109.7 109.8 109.9 110.0 110.1 110.2 110.3 110.4 110.5 110.6 110.7 110.8 110.9 111.0 111.1 111.2 111.3 111.4 111.5 111.6 111.7 111.8 111.9 112.0 112.1 112.2 112.3 112.4 112.5 112.6 112.7 112.8 112.9 113.0 113.1 113.2 113.3 113.4 113.5 113.6 113.7 113.8 113.9 114.0 114.1 114.2 114.3 114.4 114.5 114.6 114.7 114.8 114.9 115.0 115.1 115.2 115.3 115.4 115.5 115.6 115.7 115.8 115.9 116.0 116.1 116.2 116.3 116.4 116.5 116.6 116.7 116.8 116.9 117.0 117.1 117.2 117.3 117.4 117.5 117.6 117.7 117.8 117.9 118.0 118.1 118.2 118.3 118.4 118.5 118.6 118.7 118.8 118.9 119.0 119.1 119.2 119.3 119.4 119.5 119.6 119.7 119.8 119.9 120.0 120.1 120.2 120.3 120.4 120.5 120.6 120.7 120.8 120.9 121.0 121.1 121.2 121.3 121.4 121.5 121.6 121.7 121.8 121.9 122.0 122.1 122.2 122.3 122.4 122.5 122.6 122.7 122.8 122.9 123.0 123.1 123.2 123.3 123.4 123.5 123.6 123.7 123.8 123.9 124.0 124.1 124.2 124.3 124.4 124.5 124.6 124.7 124.8 124.9 125.0 125.1 125.2 125.3 125.4 125.5 125.6 125.7 125.8 125.9 126.0 126.1 126.2 126.3 126.4 126.5 126.6 126.7 126.8 126.9 127.0 127.1 127.2 127.3 127.4 127.5 127.6 127.7 127.8 127.9 128.0 128.1 128.2 128.3 128.4 128.5 128.6 128.7 128.8 128.9 129.0 129.1 129.2 129.3 129.4 129.5 129.6 129.7 129.8 129.9 130.0 130.1 130.2 130.3 130.4 130.5 130.6 130.7 130.8 130.9 131.0 131.1 131.2 131.3 131.4 131.5 131.6 131.7 131.8 131.9 132.0 132.1 132.2 132.3 132.4 132.5 132.6 132.7 132.8 132.9 133.0 133.1 133.2 133.3 133.4 133.5 133.6 133.7 133.8 133.9 134.0 134.1 134.2 134.3 134.4 134.5 134.6 134.7 134.8 134.9 135.0 135.1 135.2 135.3 135.4 135.5 135.6 135.7 135.8 135.9 136.0 136.1 136.2 136.3 136.4 136.5 136.6 136.7 136.8 136.9 137.0 137.1 137.2 137.3 137.4 137.5 137.6 137.7 137.8 137.9 138.0 138.1 138.2 138.3 138.4 138.5 138.6 138.7 138.8 138.9 139.0 139.1 139.2 139.3 139.4 139.5 139.6 139.7 139.8 139.9 140.0 140.1 140.2 140.3 140.4 140.5 140.6 140.7 140.8 140.9 141.0 141.1 141.2 141.3 141.4 141.5 141.6 141.7 141.8 141.9 142.0 142.1 142.2 142.3 142.4 142.5 142.6 142.7 142.8 142.9 143.0 143.1 143.2 143.3 143.4 143.5 143.6 143.7 143.8 143.9 144.0 144.1 144.2 144.3 144.4 144.5 144.6 144.7 144.8 144.9 145.0 145.1 145.2 145.3 145.4 145.5 145.6 145.7 145.8 145.9 146.0 146.1 146.2 146.3 146.4 146.5 146.6 146.7 146.8 146.9 147.0 147.1 147.2 147.3 147.4 147.5 147.6 147.7 147.8 147.9 148.0 148.1 148.2 148.3 148.4 148.5 148.6 148.7 148.8 148.9 149.0 149.1 149.2 149.3 149.4 149.5 149.6 149.7 149.8 149.9 150.0 150.1 150.2 150.3 150.4 150.5 150.6 150.7 150.8 150.9 151.0 151.1 151.2 151.3 151.4 151.5 151.6 151.7 151.8 151.9 152.0 152.1 152.2 152.3 152.4 152.5 152.6 152.7 152.8 152.9 153.0 153.1 153.2 153.3 153.4 153.5 153.6 153.7 153.8 153.9 154.0 154.1 154.2 154.3 154.4 154.5 154.6 154.7 154.8 154.9 155.0 155.1 155.2 155.3 155.4 155.5 155.6 155.7 155.8 155.9 156.0 156.1 156.2 156.3 156.4 156.5 156.6 156.7 156.8 156.9 157.0 157.1 157.2 157.3 157.4 157.5 157.6 157.7 157.8 157.9 158.0 158.1 158.2 158.3 158.4 158.5 158.6 158.7 158.8 158.9 159.0 159.1 159.2 159.3 159.4 159.5 159.6 159.7 159.8 159.9 160.0 160.1 160.2 160.3 160.4 160.5 160.6 160.7 160.8 160.9 161.0 161.1 161.2 161.3 161.4 161.5 161.6 161.7 161.8 161.9 162.0 162.1 162.2 162.3 162.4 162.5 162.6 162.7 162.8 162.9 163.0 163.1 163.2 163.3 163.4 163.5 163.6 163.7 163.8 163.9 164.0 164.1 164.2 164.3 164.4 164.5 164.6 164.7 164.8 164.9 165.0 165.1 165.2 165.3 165.4 165.5 165.6 165.7 165.8 165.9 166.0 166.1 166.2 166.3 166.4 166.5 166.6 166.7 166.8 166.9 167.0 167.1 167.2 167.3 167.4 167.5 167.6 167.7 167.8 167.9 168.0 168.1 168.2 168.3 168.4 168.5 168.6 168.7 168.8 168.9 169.0 169.1 169.2 169.3 169.4 169.5 169.6 169.7 169.8 169.9 170.0 170.1 170.2 170.3 170.4 170.5 170.6 170.7 170.8 170.9 171.0 171.1 171.2 171.3 171.4 171.5 171.6 171.7 171.8 171.9 172.0 172.1 172.2 172.3 172.4 172.5 172.6 172.7 172.8 172.9 173.0 173.1 173.2 173.3 173.4 173.5 173.6 173.7 173.8 173.9 174.0 174.1 174.2 174.3 174.4 174.5 174.6 174.7 174.8 174.9 175.0 175.1 175.2 175.3 175.4 175.5 175.6 175.7 175.8 175.9 176.0 176.1 176.2 176.3 176.4 176.5 176.6 176.7 176.8 176.9 177.0 177.1 177.2 177.3 177.4 177.5 177.6 177.7 177.8 177.9 178.0 178.1 178.2 178.3 178.4 178.5 178.6 178.7 178.8 178.9 179.0 179.1 179.2 179.3 179.4 179.5 179.6 179.7 179.8 179.9 180.0 180.1 180.2 180.3 180.4 180.5 180.6 180.7 180.8 180.9 181.0 181.1 181.2 181.3 181.4 181.5 181.6 181.7 181.8 181.9 182.0 182.1 182.2 182.3 182.4 182.5 182.6 182.7 182.8 182.9 183.0 183.1 183.2 183.3 183.4 183.5 183.6 183.7 183.8 183.9 184.0 184.1 184.2 184.3 184.4 184.5 184.6 184.7 184.8 184.9 185.0 185.1 185.2 185.3 185.4 185.5 185.6 185.7 185.8 185.9 186.0 186.1 186.2 186.3 186.4 186.5 186.6 186.7 186.8 186.9 187.0 187.1 187.2 187.3 187.4 187.5 187.6 187.7 187.8 187.9 188.0 188.1 188.2 188.3 188.4 188.5 188.6 188.7 188.8 188.9 189.0 189.1 189.2 189.3 189.4 189.5 189.6 189.7 189.8 189.9 190.0 190.1 190.2 190.3 190.4 190.5 190.6 190.7 190.8 190.9 191.0 191.1 191.2 191.3 191.4 191.5 191.6 191.7 191.8 191.9 192.0 192.1 192.2 192.3 192.4 192.5 192.6 192.7 192.8 192.9 193.0 193.1 193.2 193.3 193.4 193.5 193.6 193.7 193.8 193.9 194.0 194.1 194.2 194.3 194.4 194.5 194.6 194.7 194.8 194.9 195.0 195.1 195.2 195.3 195.4 195.5 195.6 195.7 195.8 195.9 196.0 196.1 196.2 196.3 196.4 196.5 196.6 196.7 196.8 196.9 197.0 197.1 197.2 197.3 197.4 197.5 197.6 197.7 197.8 197.9 198.0 198.1 198.2 198.3 198.4 198.5 198.6 198.7 198.8 198.9 199.0 199.1 199.2 199.3 199.4 199.5 199.6 199.7 199.8 199.9 200.0 200.1 200.2 200.3 200.4 200.5 200.6 200.7 200.8 200.9 201.0 201.1 201.2 201.3 201.4 201.5 201.6 201.7 201.8 201.9 202.0 202.1 202.2 202.3 202.4 202.5 202.6 202.7 202.8 202.9 203.0 203.1 203.2 203.3 203.4 203.5 203.6 203.7 203.8 203.9 204.0 204.1 204.2 204.3 204.4 204.5 204.6 204.7 204.8 204.9 205.0 205.1 205.2 205.3 205.4 205.5 205.6 205.7 205.8 205.9 206.0 206.1 206.2 206.3 206.4 206.5 206.6 206.7 206.8 206.9 207.0 207.1 207.2 207.3 207.4 207.5 207.6 207.7 207.8 207.9 208.0 208.1 208.2 208.3 208.4 208.5 208.6 208.7 208.8 208.9 209.0 209.1 209.2 209.3 209.4 209.5 209.6 209.7 209.8 209.9 210.0 210.1 210.2 210.3 210.4 210.5 210.6 210.7 210.8 210.9 211.0 211.1 211.2 211.3 211.4 211.5 211.6 211.7 211.8 211.9 212.0 212.1 212.2 212.3 212.4 212.5 212.6 212.7 212.8 212.9 213.0 213.1 213.2 213.3 213.4 213.5 213.6 213.7 213.8 213.9 214.0 214.1 214.2 214.3 214.4 214.5 214.6 214.7 214.8 214.9 215.0 215.1 215.2 215.3 215.4 215.5 215.6 215.7 215.8 215.9 216.0 216.1 216.2 216.3 216.4 216.5 216.6 216.7 216.8 216.9 217.0 217.1 217.2 217.3 217.4 217.5 217.6 217.7 217.8 217.9 218.0 218.1 218.2 218.3 218.4 218.5 218.6 218.7 218.8 218.9 219.0 219.1 219.2 219.3 219.4 219.5 219.6 219.7 219.8 219.9 220.0 220.1 220.2 220.3 220.4 220.5 220.6 220.7 220.8 220.9 221.0 221.1 221.2 221.3 221.4 221.5 221.6 221.7 221.8 221.9 222.0 222.1 222.2 222.3 222.4 222.5 222.6 222.7 222.8 222.9 223.0 223.1 223.2 223.3 223.4 223.5 223.6 223.7 223.8 223.9 224.0 224.1 224.2 224.3 224.4 224.5 224.6 224.7 224.8 224.9 225.0 225.1 225.2 225.3 225.4 225.5 225.6 225.7 225.8 225.9 226.0 226.1 226.2 226.3 226.4 226.5 226.6 226.7 226.8 226.9 227.0 227.1 227.2 227.3 227.4 227.5 227.6 227.7 227.8 227.9 228.0 228.1 228.2 228.3 228.4 228.5 228.6 228.7 228.8 228.9 229.0 229.1 229.2 229.3 229.4 229.5 229.6 229.7 229.8 229.9 230.0 230.1 230.2 230.3 230.4 230.5 230.6 230.7 230.8 230.9 231.0 231.1 231.2 231.3 231.4 231.5 231.6 231.7 231.8 231.9 232.0 232.1 232.2 232.3 232.4 232.5 232.6 232.7 232.8 232.9 233.0 233.1 233.2 233.3 233.4 233.5 233.6 233.7 233.8 233.9 234.0 234.1 234.2 234.3 234.4 234.5 234.6 234.7 234.8 234.9 235.0 235.1 235.2 235.3 235.4 235.5 235.6 235.7 235.8 235.9 236.0 236.1 236.2 236.3 236.4 236.5 236.6 236.7 236.8 236.9 237.0 237.1 237.2 237.3 237.4 237.5 237.6 237.7 237.8 237.9 238.0 238.1 238.2 238.3 238.4 238.5 238.6 238.7 238.8 238.9 239.0 239.1 239.2 239.3 239.4 239.5 239.6 239.7 239.8 239.9 240.0 240.1 240.2 240.3 240.4 240.5 240.6 240.7 240.8 240.9 241.0 241.1 241.2 241.3 241.4 241.5 241.6 241.7 241.8 241.9 242.0 242.1 242.2 242.3 242.4 242.5 242.6 242.7 242.8 242.9 243.0 243.1 243.2 243.3 243.4 243.5 243.6 243.7 243.8 243.9 244.0 244.1 244.2 244.3 244.4 244.5 244.6 244.7 244.8 244.9 245.0 245.1 245.2 245.3 245.4 245.5 245.6 245.7 245.8 245.9 246.0 246.1 246.2 246.3 246.4 246.5 246.6 246.7 246.8 246.9 247.0 247.1 247.2 247.3 247.4 247.5 247.6 247.7 247.8 247.9 248.0 248.1 248.2 248.3 248.4 248.5 248.6 248.7 248.8 248.9 249.0 249.1 249.2 249.3 249.4 249.5 249.6 249.7 249.8 249.9 250.0 250.1 250.2 250.3 250.4 250.5 250.6 250.7 250.8 250.9 251.0 251.1 251.2 251.3 251.4 251.5 251.6 251.7 251.8 251.9 252.0 252.1 252.2 252.3 252.4 252.5 252.6 252.7 252.8 252.9 253.0 253.1 253.2 253.3 253.4 253.5 253.6 253.7 253.8 253.9 254.0 254.1 254.2 254.3 254.4 254.5 254.6 254.

